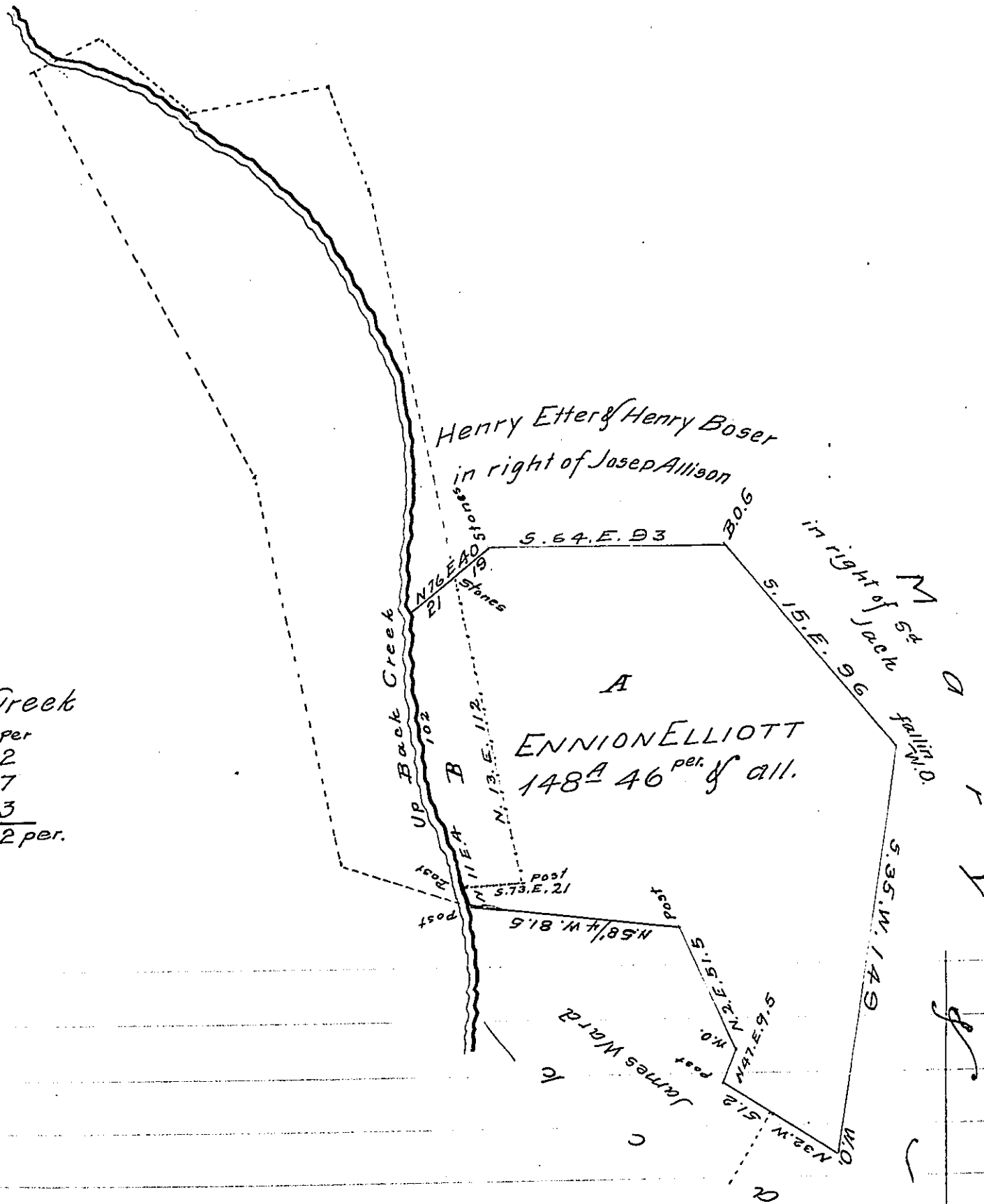


FORM NO 1.

Courses of Creek

N	5	E	32	per
N	15	E	47	
N	26	E	23	
				102 per.



A Draught of a tract of land situate in Hamilton Township Franklin County formerly Cumberland. The part A being a tract of land surveyed for Alexander Ellis on Warrant bearing date May 24th 1753, containing 129 acres 151 perches and allowance. The part B being part of a tract of land containing 121 acres & allowance which was surveyed March 17th 1745 for George Cumming in pursuance of a Warrant bearing date March 3^d 1744, containing 14 acres 91 perches & all. Containing in all 148 acres 46 perches & allowance. Resurveyed March 18th 1842

for Ennion Elliott pr. Hugh Auld D.S.
To Jacob Sallade Esq^r Surveyor General of Pa.

IN TESTIMONY that the above is a copy of the original remaining on file in the Department of Internal Affairs of Pennsylvania, made conformably to an Act of Assembly approved the 16th day of February, 1833, I have hereunto set my Hand and caused the Seal of said Department to be affixed at Harrisburg, this thirteenth day of October 1907

Hugh Auld
Secretary of Internal Affairs.